

FAS A4 | AISI316

SCREWS FOR FAÇADES

OPTIMISED GEOMETRY

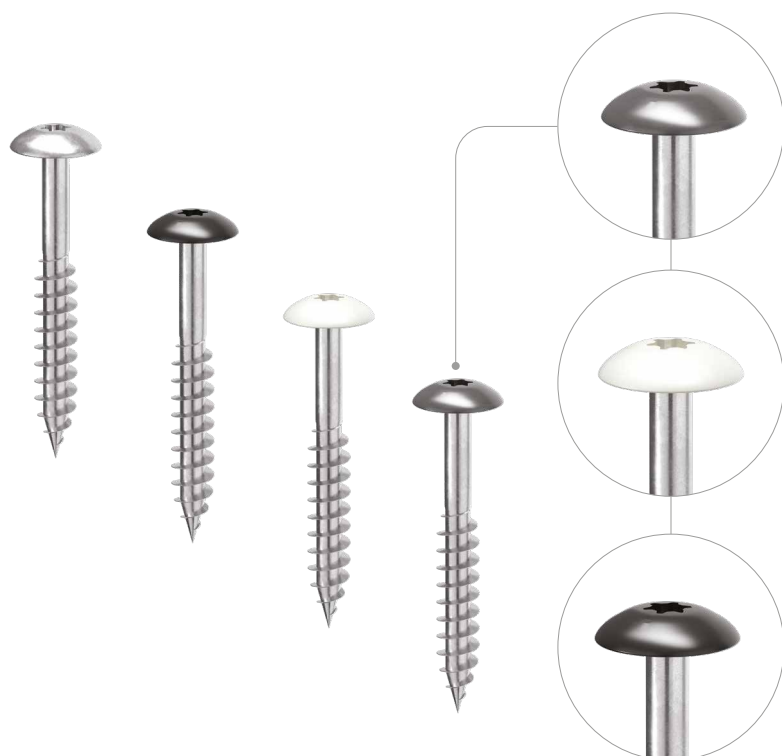
Thanks to its flange head, partially threaded body and self-drilling tip, it is the appropriate screw for fastening façade panels (HPL, fibre cement sheets, etc.) on timber battens.

A4 | AISI316

A4 | AISI316 austenitic stainless steel for high corrosion resistance. Ideal for environments adjacent to the sea in corrosivity class C5 and for insertion on the most aggressive timbers in class T5.

COLORED HEAD

Available in white, grey or black for perfect color uniformity with the panel. The color of the head can be customised on request.



DIAMETER [in]

0.14 0.19 0.32

LENGTH [in]

13/16 1 1/2 12 5/8

EXPOSURE CONDITION



ATMOSPHERIC CORROSIVITY

☐ C1 ☒ C2 ☐ C3 ☐ C4 ☐ C5

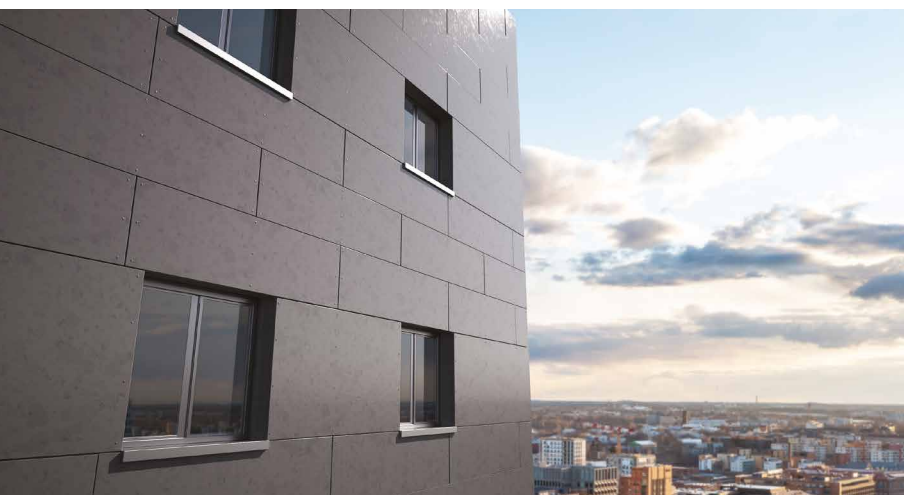
WOOD CORROSIVITY

☐ T1 ☐ T2 ☐ T3 ☐ T4 ☐ T5

MATERIAL

A4
AISI 316

A4 | AISI316 austenitic stainless steel
(CRC III)




FIELDS OF USE


It can be used outdoors in aggressive environments. Fixing of façade elements (HPL panels, fibre cement slabs, etc.) to timber substructures.

CODES AND DIMENSIONS


FAS: stainless steel

	d ₁	CODE	L		b		pcs
	[mm] [in]		[mm]	[in]	[mm]	[in]	
	4,8 0.19 #10 TX 20	FAS4825	25	1	17	11/16	200
		FAS4838	38	1 1/2	23	7/8	200


FAS W: RAL 9010 - white

	d ₁	CODE	L		b		pcs
	[mm] [in]		[mm]	[in]	[mm]	[in]	
	4,8 0.19 #10 TX 20	FAS4825	25	1	17	11/16	200
		FAS4838	38	1 1/2	23	7/8	200

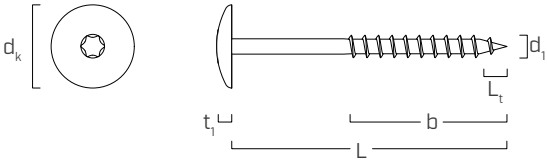
FAS N: RAL 9005 - black

	d ₁	CODE	L		b		pcs
	[mm] [in]		[mm]	[in]	[mm]	[in]	
	4,8 0.19 #10 TX 20	FAS4825	25	1	17	11/16	200
		FAS4838	38	1 1/2	23	7/8	200

FAS G: RAL 7016 - anthracite gray

	d ₁	CODE	L		b		pcs
	[mm] [in]		[mm]	[in]	[mm]	[in]	
	4,8 0.19 #10 TX 20	FAS4825	25	1	17	11/16	200
		FAS4838	38	1 1/2	23	7/8	200

GEOMETRY



Nominal diameter	d ₁	[in] ⁽¹⁾	0.19
Outer thread diameter	d ₁	[mm]	4,8
		[in]	0.189
Head diameter	d _k	[in]	0.484
Head thickness	t ₁	[in]	0.106
Tip length	L _t	[in]	0.189

⁽¹⁾The nominal diameter of the screw is converted into imperial units and rounded up to the nearest decimal point.



COMPATIBILITY

FAS is compatible with the most common fibre cement and HPL façade panel systems.